

Canon

imagePRESS
V900/V800/V700

COLOR PRODUCTION
DIGITAL PRESSES



Brilliant **V**ision. Inside and Out.

imagePRESS V900/V800/V700

Introducing the imagePRESS V900 Series. Outsized performance in a compact footprint.



FRONT-TO-BACK TOLERANCE UP TO +/- 0.8mm*

PRODUCTION SPEED UP TO 90 ipm (LETTER)

MAXIMUM SHEET FEEDING CAPACITY 10,400**

ENERGY STAR® CERTIFIED

PRINT RESOLUTION 2400x2400 DPI



SUPPORTS UP TO 130 lb. COVER*

SUPPORTS MEDIA UP TO 51.2" IN LENGTH*

* Stocks up to 13" x 19.2".
** Capacity based on 20 lb. Bond.
• Optional accessories required.

Efficient, hassle-free production printing.

When it comes to delivering for your customers, you need a partner with vision.

Introducing the imagePRESS V900 Series. These light- to mid-volume production digital color presses are designed to offer impressive productivity, repeatable color, and incredible automation.

The imagePRESS V900 Series' advanced core technologies have been harnessed to allow you to realize your vision more easily and efficiently than ever. Canon has seamlessly blended form and function to help inexperienced operators produce brilliant output with superb color *fast!* Speeds of up to 90 ppm (Letter) and the default High-Productivity Mode can help you hit tight deadlines and get more work done throughout the day. The Inline Spectrophotometers (ILS) allow your operators to quickly produce repeatable, accurate color at just the push of a button.* The Compact Registration Technology helps enable highly accurate front-to-back registration on important print jobs such as booklets, business cards, and direct mail pieces. And the imagePRESS V900 Series supports specialty media, which can help you offer high-margin jobs to your most critical customers.

Productivity. Quality. Versatility. The imagePRESS V900 Series is designed to meet your clients' demanding expectations and can help expand your portfolio to include creative and innovative applications.

 High Productivity
Across Your Run

 Superb Color
Repeatability

 Tight Front-to-Back
Registration Alignment

 Support for a Wide Range
of Specialty Stocks**



imagePRESS V900 shown with optional accessories.

* PRISMAsync print server or imagePRESS Server required.

** Optional accessories may be required.

Remarkable productivity and flexibility.

Built inside the imagePRESS V900 Series are remarkable technologies designed to produce stunning and repeatable output and keep your digital press running.

Impressively Versatile

Productivity that won't quit

With the default High-Productivity Mode, you can realize high throughput on your long runs. Plus, the imagePRESS V900 Series' ability to hold highly accurate color and tight registration across a run with real-time adjustment means you can experience minimal downtime.

Benefit from varied shapes and sizes

Offer customers more with expanded support for a wide variety of media, including coated and thick stocks up to 130 lb. Cover* as well as specialty stocks. The imagePRESS V900 Series easily handles everything from envelopes to rigid, synthetic, and embossed stocks. And the ability to auto duplex media up to 13" x 30" opens the door to six-panel brochures, booklets, and posters/signage, too.*

Waste less, print more

Keeping the press up and running is a top priority. The air separation assists with feeding your stocks reliably into the press, which can help reduce reprints and paper spoilage. The Multi Sheet Detection of the Multi Drawer Paper Deck* automatically diverts any jam-prone sheets to a dedicated purge tray, without stopping the press or requiring immediate operator attention.

Amazingly Vigilant

Precise front-to-back registration

A combination of digital sensors, together with the Compact Registration Unit, help to ensure that even heavy and large sheets are accurately and consistently positioned. The optional Sensing Unit allows the press to do the registration adjustments for you in real time. Improved internal controls offer stable alignment to help deliver repeatable, high-quality output with minimal effort.



* Optional accessories may be required.

Increase efficiency on routine tasks



Quick, Easy Registration

Help reduce the manual process of placing sheets on the glass or measuring with a ruler to improve front-to-back alignment by placing sheets in the ADF tray** and pressing a button.



Predictable Color

Making sure that the imagePRESS V900 Series produces your expected results is as simple and fast as placing calibration and density uniformity sheets in the ADF tray** and pressing "Start".



Consistent Quality

Let the press determine the optimal parameters by placing sheets in the ADF tray** to help reduce mottling and produce full, rich solids on a wide range of media surfaces.

** Optional. Feature not supported by PRISMAsync print server at launch.

Stunning color, on repeat.

Stand out with consistent and accurate color.

Anticipate Every Detail

Automated and efficient color control

The standard Inline Spectrophotometers (ILS) help operators achieve accurate, repeatable color, regardless of skill level. This imagePRESS V900 Series is designed to help you reliably meet deadlines and move projects out the door rapidly and with beautifully consistent results. Once you've initiated the process, the press can create a custom output profile and G7® calibration in just minutes.* Canon's powerful ILS can automate your crucial color tasks. Multi D.A.T. then makes real-time adjustments to help produce consistent color throughout a run.

Offset-like print quality

Canon's Translucent CV Toner allows a media's surface properties to be preserved, producing vibrant, vivid images across the sheet surface on a wide variety of stocks.

Crisp, rich images

The flexible transfer belt and simple transfer adjustment technology allow the toner to fill in the peaks and valleys of textured and embossed stocks. Full, rich solids and high-density images can be reliably produced for custom and premium applications.

Rock-solid stability

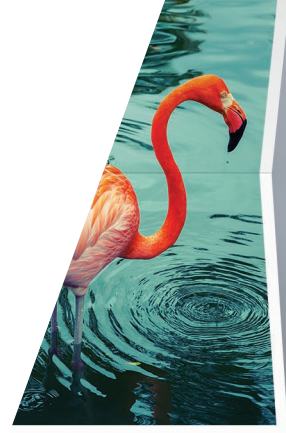
Advanced internal stability maintains a consistent environment. Now add to this the automatic measuring of multi-gradation density patches and precise front-to-back registration. The results are stunning highlights, mid-tones, and shadows that can meet high expectations.

* PRISMAsync print server or imagePRESS Server required.



Real-Time Adjustments

With just the push of a button, the optional Sensing Unit** allows operators to set jobs up to adjust color tone accuracy and front-to-back registration before printing. It can help monitor and maintain these settings across a print run, continuously adjusting on the fly.



Big, colorful results from a compact, reliable, versatile press.



imagePRESS V900 shown with optional accessories.

Visionary technology inside.

High Productivity

The engine will maintain high productivity across your production runs with speeds of 90 ppm.

R-VCSEL Imaging Laser

Canon's advanced 32-beam R-VCSEL laser helps deliver 2400 x 2400 dpi print resolution, outputting detailed color images with outstanding definition at high speeds.

VF Developer Unit

A strategically placed air intake to the developer unit helps keep the environment consistent and stable across a production run.

Multi-Exposure Technology

The R-VCSEL laser writes every dot on the drum twice, which helps maintain high image quality consistently across long production runs.

Translucent CV Toner

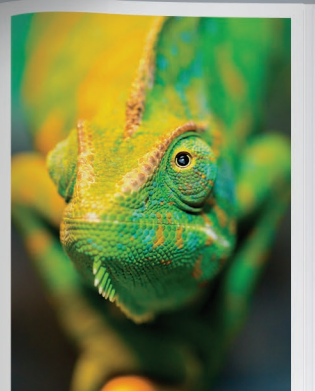
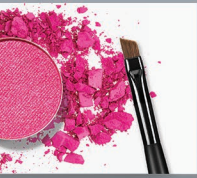
Helps produce consistent, vivid, and crisp images on a wide range of media with a realistic, offset-like finish.

Advanced Imaging Transfer Belt

A flexible belt presses the toner into the media for high-density image transfer onto embossed and textured stocks.



Brilliant results outside.



Compact Registration Unit

Designed to achieve highly accurate front-to-back and sheet-to-sheet registration across long runs on large, heavy, and sturdy stocks—all in a compact design.

Multi D.A.T.

Twenty (20) multi-gradation density patches are measured and corrected automatically during production, helping to ensure consistent halftones.

ILS (Inline Spectrophotometers)

With a push of a button, these sensors allow advanced color adjustments such as engine linearization, media calibration, and color profile creation.*

Multi-Sheet Detection

The standard trays are equipped with multi-sheet detection to help prevent blank sheets from entering and helping to prevent issues from these jam-prone sheets.

* PRISMAsync print server or imagePRESS Server required.

Streamline your workflow with state-of-the-art print servers.

Highly efficient, flexible, and accurate—these powerful print servers are designed to get the job done.

PRISMAsync Print Server

Canon's PRISMAsync print server can help boost production capacity and lower costs. It's designed to deliver high-performance, deadline-driven printing that can assist with growing your business and nurturing successful relationships.

Embedded in-RIP G7® Calibration utilizes the ILS to allow operators to calibrate, profile, and verify the colors of the imagePRESS V900 Series to help achieve a near-neutral print condition quickly and easily.

Job Scheduler helps you manage your daily workload with up to eight hours of plan-ahead production. It displays the completion time of jobs and alerts you when an intervention for media, toner, or supplies are upcoming. The intuitive interface makes prepress and production tasks clear.

Pixel Precise Preview incorporates additional flexible color-correction capabilities, such as CMYK curve editing and digital moiré reduction, with immediate visual feedback.

PRISMAsync Remote Manager allows you to monitor multiple presses and edit job properties, manipulate color curves, manage queues, and submit and reroute print jobs.

The **PRISMAsync Automated Color Task** feature combines multiple color setup functions into a single action. Thanks to the ILS, automated press linearization, G7® media calibration and profile creation, and verification procedures can be accomplished quickly and easily for full, hands-off automation.

The **PRISMAlytics Dashboard** puts recorded press data at your fingertips. This can help reduce turnaround time, waste, and costs by giving you access to detailed information on your usage, production, and consumption.





Efficiently manage prepress and color with flexible workflows.

imagePRESS Servers N500/P400

With the ability to easily produce jobs requiring mixed paper sizes, paper types, and finishing as well as powerful spot-color management and advanced color utilities, these controllers can quickly help operators modify routine job properties.

The **Fiery® Spot-On™ Color Matching** utility helps remove the guesswork from color matching, offering an intuitive interface for fast and easy defining and modifying of spot colors.

EFI's **1-Step Color Management** allows users to calibrate and create a media profile for fast, easy, and reliable color management while **Zero-Touch Recalibration** checks each job's paper calibration timer to recalibrate, if necessary, before printing.

Fiery JobFlow automates prepress job preparation steps to produce ready-to-print files. It enables operators to build easy-to-use workflows by performing essential job processing tasks such as image enhancement, imposition, and preflighting.

A user-friendly print management interface for the imagePRESS server, **Command WorkStation®**, centralizes and simplifies job management. Operators can easily monitor and direct jobs, automate workflows, and preview and adjust documents.

Media Librarian, Canon's sophisticated paper management application, can help improve make-ready productivity on the imagePRESS V900 Series digital presses powered by the imagePRESS Servers N500/P400. It creates, edits, and organizes paper stocks from a single, intuitive interface.

imagePRESS Printer Kit

This embedded Adobe PostScript® controller for entry-level production has been designed for operations that use a printer driver workflow or a centralized print, scan, and device management system.

Providing the flexibility that today's demanding business operations require, the interface boasts many customizable, streamlined features. And with Canon's innovative MEAP platform, you can incorporate cost recovery, document distribution, pull printing, advanced scanning, and other customized applications.*

* Separate purchase required.

We are with you from start to finish.

Professional finishing results can be yours with the strong, inline capabilities and extensive, optional integrated solutions.

Produce a broad range of deliverables—from trifold brochures to saddle-stitched booklets, direct mail to business cards, and collateral and training materials to flyers and posters.

Diversify your offerings with the ability to print on attention-grabbing stocks, including textured and thin-coated papers, synthetic media, envelopes in a wide range of sizes, and long sheets.*

Finishing Options



Document Insertion Unit

This module enables insertion of slip sheets or preprinted covers for booklets and complex jobs.



Professional Punching and Creasing

The many die patterns offered for in-line hole punching (including double punching) and creasing help minimize toner cracking on the spines of saddle-stitched booklets.



Perfect Binding

Using hot glue, this module binds covers to book-blocks of up to 200 pages** and can trim on all three sides for full-bleed books or manuals.



High-Capacity Stacking

Realize outstanding productivity with unload-while-run capability, helping to provide uninterrupted printing with stacking up to 6,000 sheets.**



Ring Binding

Use the GBC eWire Pro to automate the time-consuming process of wire binding manuals, booklets, and reports.



Paper Folding

Offer promotional pamphlets, brochures, and more with the ability to produce Z-fold, C-fold, accordion fold, and double-parallel fold documents.



Booklet Trimming

Modules can be combined with the Booklet Finisher to produce professional, full-bleed, square-bound booklets in-line. This helps maintain high productivity with a large-capacity trim waste bin and on-the-fly waste removal for continuous production.



Professional Booklet-Makers

Deliver professional-looking, lay-flat booklets with speed and simplicity using the Plockmatic BLM50/35 for up to 200-page** professional, square-folded, saddle-stitched booklets.

Feeding Options



Multi Drawer Paper Deck

Equipped with air-assist and air-separation, it supports up to 13" x 19.2" and 130 lb. Cover. The 5,000-sheet** capacity allows jobs to run with minimal interruption.



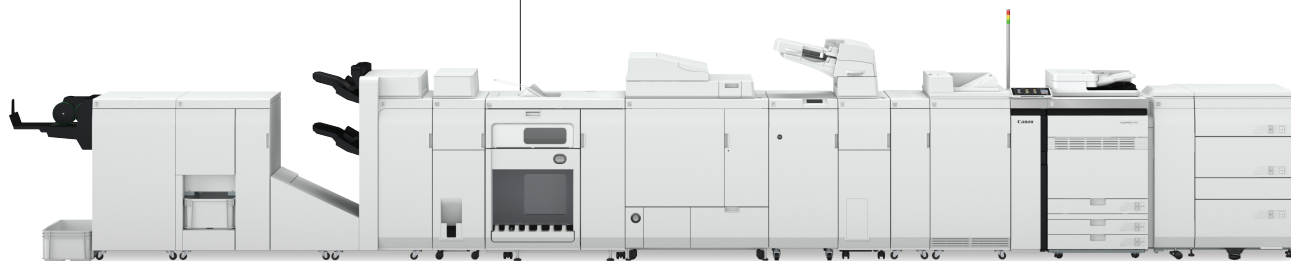
POD Deck Lite

Designed for locations with space restrictions, this deck's 3,500-sheet** capacity with air-assist and air-separation supports paper sizes up to 13" x 19.2".



POD Deck Lite XL

In addition to the capabilities of the POD Deck Lite, this feeding option holds up to 1,000 sheets** of media up to 13" x 30" in size—optimal for six-panel brochures, book covers, and posters.



imagePRESS V900 shown with optional accessories.

* Optional accessories may be required.

** Capacity based on 20 lb. Bond.

Take your printing to the next level.

Open up new possibilities for customer satisfaction with Canon U.S.A., a business partner you can rely on for innovative printing solutions.

Empower Your Printing with PRISMA

Whether you're an in-house print center or a commercial print service provider, you strive to deliver a personal, flexible, and efficient value-added service. You must also be able to produce short runs at competitive rates while still making a profit. This demands efficient workflow management and the ongoing monitoring and control of press performance, wherever you are.

PRISMA Home* is the portal at the heart of PRISMA cloud applications. It provides central and unified access to your PRISMA cloud-connected workflow applications and those tools used for monitoring and controlling press performance. With PRISMA Home, you can leverage multiple engines at once from compatible PRISMA cloud applications and access your critical data from virtually anywhere.

Team Up with a Visionary Leader

The imagePRESS V900 Series of digital presses can help transform your business, helping you increase your efficiency and flexibility. With 80-plus years of experience in designing and developing innovative imaging technology, Canon is constantly coming up with new solutions and refining its offerings to help your business maintain and increase its success. Together, we can help inspire your customers, improve your productivity, and enrich your operation's offerings. Canon's vision, realized through superb advances in technology, can help put your business on the path to a brighter future.



Discover More:
usa.canon.com/productionprinting

* Separate purchase required.

imagePRESS V900/V800/V700

Specifications

		imagePRESS V900	imagePRESS V800	imagePRESS V700
Print Speed (Simplex/Duplex)	Letter	Up to 90 ipm	Up to 81 ipm	Up to 71 ipm
	11" x 17"	Up to 45 ipm	Up to 40 ipm	Up to 35 ipm
	12" x 18"	Up to 42 ipm	Up to 40 ipm	Up to 35 ipm
	13" x 19"	Up to 40 ipm	Up to 38 ipm	Up to 33 ipm
	13" x 30"	Up to 23 ipm	Up to 22 ipm	Up to 19 ipm
Scan Speed* (Letter, 300 dpi)		Up to 270 ipm		
Print Resolution	Maximum	2400 x 2400 dpi		
Paper Capacity	Standard	Up to 1,650 Sheets		
	Maximum	Up to 10,400 Sheets		
Paper Size	Standard	3.9" x 5.8" to 13" x 19.2"		
	Optional	5.5" x 7.2" to 13" x 51.2"		
Paper Weight	Standard	14 lb. Bond to 110 lb. Cover		
	Optional	14 lb. Bond to 130 lb. Cover		
Automatic Duplexing	Standard	3.9" x 5.8" to 13" x 19.2"		
	Optional	5.5" x 7.2" to 13" x 30"		
Envelopes		#10 Business, Monarch, 6" x 9", 9" x 12", 10" x 13", DL, ISO-C5		
Print Servers		PRISMAsync Print Server imagePRESS Server N500 imagePRESS Server P400 imagePRESS Printer Board		

* Optional.

Canon

usa.canon.com



As an ENERGY STAR® Partner, Canon U.S.A., Inc. qualified these models as meeting the ENERGY STAR® energy efficiency criteria through an EPA recognized certification body. ENERGY STAR and the ENERGY STAR mark are registered U.S. marks. Canon, imagePRESS, and the GENUINE logo are registered trademarks of Canon Inc. in the United States and may also be registered trademarks or trademarks in other countries. PRISMA is a registered trademark of Canon Production Printing Netherlands B.V. All other referenced product names and marks are trademarks of their respective owners. To view detailed specifications, please consult the *Customer Expectations Document*. Printer output images may be simulated. Specifications and availability subject to change without notice. Not responsible for typographical errors.
©2022 Canon U.S.A., Inc. All rights reserved.

Federal Law prohibits copying of certain documents. Violators may be subject to penalties. We suggest that you check with your own legal counsel. Canon U.S.A., Inc. and Canon Canada, Inc. intend to cooperate with Law Enforcement Agencies in connection with claims on unauthorized copying.



1022-IPV900SRBRO-PDF-DW

CANON
GENUINE
TONER, CARTRIDGE
& PARTS

